

UNCONTROLLED DOCUMENT

PART NUMBER
LCM-X01602DXX/I

REV.

A

REV. E.C.N. NUMBER AND REVISION COMMENTS

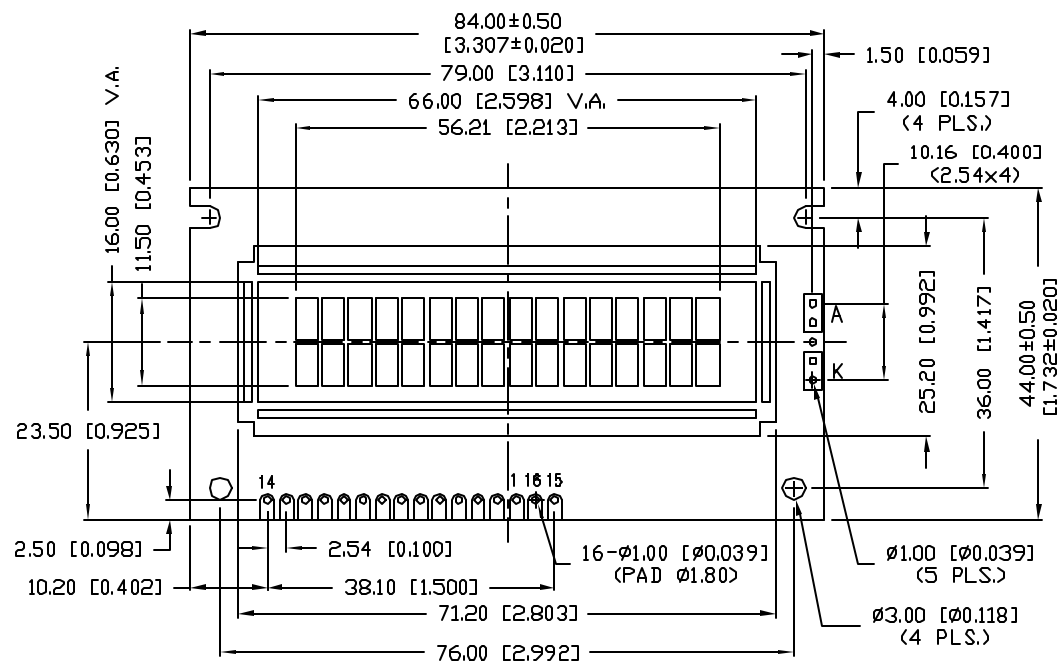
DATE

A E.C.N. #10464./

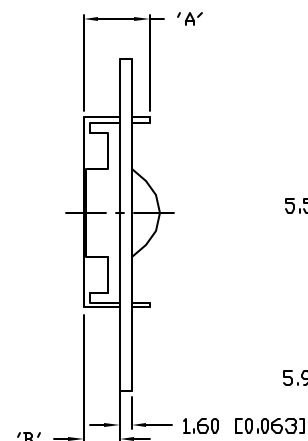
10-9-98

P/N PREFIX/SUFFIX TABLE

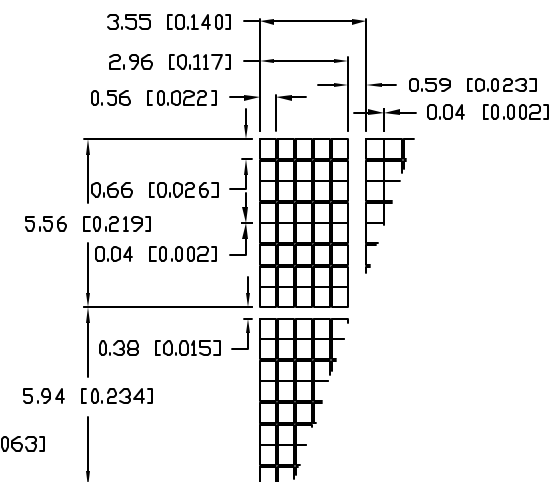
LCM-X	DX	DESCRIPTION
STANDARD	S	SR STN, REFLECTIVE
	SF	SF STN, TRANSFLECTIVE(W/ BACKLIGHT)
HIGH TEMP.	H	TR TN, REFLECTIVE
	TF	TF TN, TRANSFLECTIVE(W/ BACKLIGHT)



TYPE	DIM.	A	B
WITH BACKLIGHT		12.7	8.8
NO BACKLIGHT		8.9	4.8



CHARACTER DETAIL



CAUTION: STATIC SENSITIVE DEVICE
FOLLOW PROPER E.S.D. HANDLING PROCEDURES
WHEN WORKING WITH THIS PART.

UNCONTROLLED DOCUMENT

*UNLESS OTHERWISE SPECIFIED TOLERANCE IS ±0.25mm (±0.010")

REV.

A

PART NUMBER

LCM-X01602DXX/I

CONFIDENTIAL INFORMATION

THE INFORMATION CONTAINED IN THIS DOCUMENT IS THE PROPERTY OF LUMEX INC. EXCEPT AS SPECIFICALLY AUTHORIZED IN WRITING BY LUMEX INC., THE HOLDER OF THIS DOCUMENT SHALL KEEP ALL INFORMATION CONTAINED HEREIN CONFIDENTIAL AND SHALL PROTECT SAME IN WHOLE OR IN PART FROM DISCLOSURE AND DISSEMINATION TO ALL THIRD PARTIES.

RELIABILITY NOTE

OUR MANY YEARS OF EXPERIENCE DATA ACCUMULATION INDICATE THAT SOLDER HEAT IS A MAJOR CAUSE OF EARLY AND FUTURE FAILURE. PLEASE PAY ATTENTION TO YOUR SOLDERING PROCESS.

LUMEX
INCORPORATED

290 E. HELLEN ROAD
PALATINE, ILLINOIS 60067
PHONE: 1-847-359-2790
WEB: HTTP://WWW.LUMEX.COM

5.56mm CHARACTER HEIGHT, 16 x 2 CHARACTERS,
5 x 8 DOT MATRIX, LCD MODULE,
1/16 DUTY, 1/5 BIAS.

DRAWN BY:

CHECKED BY:

APPROVED BY:

DATE: 8-14-98

SA/BC

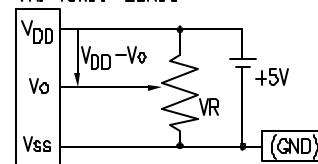
PAGE: 1 OF 2

SCALE: N/A

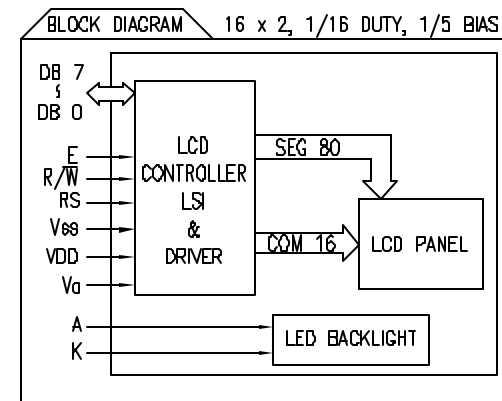
PIN CONFIGURATION

PIN NO.	SYMBOL	LEVEL	FUNCTION	
1	V _{SS}	-	POWER SUPPLY	GND (0V)
2	V _{DD}	-		5V
3	V _O	-		FOR LCD DRIVE
4	RS	H/L	REGISTER SELECT SIGNAL H: DATA INPUT L: INSTRUCTION INPUT	
5	R/W	H/L	H: DATA READ (MODULE-->MPU) L: DATA WRITE (MODULE<--MPU)	
6	E	H _H ->L	ENABLE	
7~14	DB0~DB7	H/L	DATA BUS-SOFTWARE SELECTABLE 4 OR 8 BIT MODE.	
15	A	-	ANODE	LED BACKLIGHT
16	K	-	CATHODE	LED BACKLIGHT

V_{DD}-V_O: LCD DRIVING VOLTAGE
V_R: 10K Ω - 20K Ω



A



ELECTRICAL CHARACTERISTICS

A V_{DD}=4.7V to 5.3V, T_A=25°C

ITEM			SYMBOL	CONDITION	STANDARD VALUE			UNIT
					MIN.	TYP.	MAX.	
SUPPLY VOLTAGE FOR LOGIC			$V_{DD}-V_{SS}$	-	-	5.0	-	V
SUPPLY CURRENT FOR LOGIC			I_{DD}	$V_{DD}=5V$	-	2.0	3.0	mA
INPUT VOLTAGE	HIGH		V_{IH}	-	2.2	-	4.7	V
	LOW		V_{IL}	-	0	-	0.6	V
OUTPUT VOLTAGE	HIGH		V_{OH}	-	2.4	-	-	V
	LOW		V_{OL}	-	-	-	0.4	V
*LED BACKLIGHT	VOLTAGE		V_f	$I_f=160mA$	-	4.2	4.5	V
	CURRENT		I_f	-	-	160	400	mA
	POWER CONSUMPTION		PD	-	-	660	-	mW
	LUMINOUS		L	$I_f=160mA$	70	-	-	cd/m ²
	COLOR		-	-	-	-	-	nm

*ONLY APPLIES TO MODULES WITH BACKLIGHT

ABSOLUTE MAXIMUM RATINGS

ITEM	SYMBOL	TEST CONDITION	STANDARD VALUE		UNIT
SUPPLY VOLTAGE FOR LOGIC	V _{DD} -V _{SS}	T _a =25°C	4.7	5.3	V
SUPPLY VOLTAGE FOR LCD DRIVE	V _{DD} -V _O	-	4.2@50°C	4.8@0°C	V
INPUT VOLTAGE	V _I	T _a =25°C	V _{SS}	V _{DD}	V
OPERATING TEMPERATURE	T _{opr}	LCM-S	0	50	°C
		LCM-H	-20	70	°C
STORAGE TEMPERATURE	T _{stg}	LCM-S	-20	70	°C
		LCM-H	-30	85	°C

CONFIDENTIAL INFORMATION

THE INFORMATION CONTAINED IN THIS DOCUMENT IS THE PROPERTY OF LUMEX INC. EXCEPT AS SPECIFICALLY AUTHORIZED IN WRITING BY LUMEX INC., THE HOLDER OF THIS DOCUMENT SHALL KEEP ALL INFORMATION CONTAINED HEREIN CONFIDENTIAL AND SHALL PROTECT SAME IN WHOLE OR IN PART FROM DISCLOSURE AND DISSEMINATION TO ALL THIRD PARTIES.

RELIABILITY NOTE

OUR MANY YEARS OF EXPERIENCE DATA ACCUMULATION INDICATE THAT SOLDER HEAT IS A MAJOR CAUSE OF EARLY AND FUTURE FAILURE. PLEASE PAY ATTENTION TO YOUR SOLDERING PROCESS.

LUMEX
INCORPORATED

290 E. HELLEN ROAD
PALATINE, ILLINOIS 60067
PHONE: 1-847-359-2790
WEB: HTTP://WWW.LUMEX.COM

5.56mm CHARACTER HEIGHT, 16 x 2 CHARACTERS,
5 x 8 DOT MATRIX, LCD MODULE,
1/16 DUTY, 1/5 BIAS.

DRAWN BY:

CHECKED BY:

APPROVED BY:

DATE: 8-14-98

SA/BC

PAGE: 2 OF 2

SCALE: N/A

Mouser Electronics

Authorized Distributor

Click to View Pricing, Inventory, Delivery & Lifecycle Information:

Lumex:

[LCM-S01602DTF/I](#)